



**SINORoader**

Henan Sinoroad Heavy Industry Corporation



**4000-676-878**



# USER'S MANUAL OF CHIP SPREADER

Phone: +86 0371 55007709

Mob/WhatsApp/Wechat: +86 18137858347

E-mail: [info@sinoroad.com](mailto:info@sinoroad.com)

Web: [www.sinoroad.com](http://www.sinoroad.com)

Add: Economic & Industry Development Zone, Weidu  
Area, XuChang City, Henan Province, China





Sinoroader has first-class production equipment and R&D team.

Our Vision: To be the supplier of turn-key solutions for road construction machinery applications Sinoroader has

## COMPANY PROFILE »»»

Henan Sinoroader Heavy Industry Corporation is a world-famous road and bridge machinery manufacturer, located in Zhengzhou City, Henan Province. Our producing base is located in Weidu District, Xuchang City with factory area over 80000m<sup>2</sup>.



developed a comprehensive understanding of asphalt mixing plant technology. This mastery sets Sinoroader apart from its competitors and delivers true value to the road construction industry. Professional design team and mature production line can be meet customized needs.



## Product Description >>>



It is suitable for pavement cold recycling, high-grade highway pavement surface and waterproof layer (lower sealing layer) construction, spreading gravel to improve the overall strength of the pavement. Also suitable for graded roads in the layering (spreading) process

.During the construction of the dump truck push-type gravel spreader, the pressure plate "holds" the rear driving wheel hub of the dump truck, and the dump truck drives backwards for construction, which is easy to disassemble, simple to connect, does not change the car, and does not occupy the car when it is not working. The spreading width and thickness can be adjusted as needed, and the high-efficiency working speed has been praised by the majority of users.



No jamming, the machine is equipped with a sieve, which can screen out the large material, and can achieve a uniform spreading effect.



Synchronized with the car, spread evenly. Continuous performance is strong, the machine can be used with several dump trucks.



Can spread large material 3-60mm, easy to operate, spread width/thickness can be adjusted as needed.



Standard single-axle/double-axle dump trucks can be used without changing the vehicle.



It does not occupy the dump truck, and the driving wheel hub of the dump truck is "held" by the pressure plate during construction, and it only takes a few minutes to disassemble.



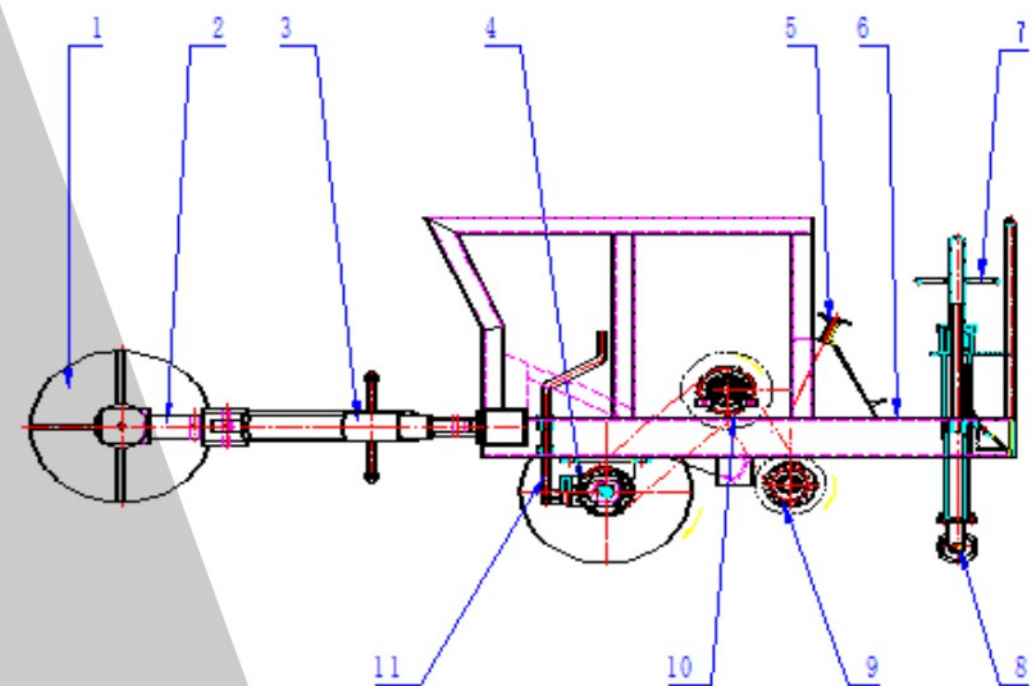
## Product Feature »»

When the pushed chip spreader work, its platen "hold" the rear driving wheel hub of the dump truck and the dump truck "pushing" to construct. The machine has been praised in a highly degree by uniform spreading effect, spreading quality of high precision and high working speed. The dump truck backing up to construct, easy to connection and disassembly. Apart from aboves, it has a few advantage such as: does not change the car, does not take the car and good environmental protection performance. The machine has accessed to the successful use in not only airports and high-speed road seal construction but also high-way maintenance cover and injection layer construction. Its efficiency is 3-6 times to the vehicle type chippings spreader.



## Structure Profile »»

1. Platen 2. Connection arm 3. Adjusting and Supporting part 4. Clutch 5. Door adjustment handle 6. Operating platform 7. Lifting wheel adjustment handle 8. Lifting wheel 9. Feeding roller 10. Distributor 11. Clutch operating handle





## Product Description »»

The Chip Spreader replaces heavy manual work with high-standard spreading uniformity and eliminates environmental pollution. It has been widely used in highway construction and highway maintenance projects. Its reasonable and reliable design ensures accurate spreading width and thickness, and electrical control is stable and reliable. It can be used for the construction of pavement upper and lower sealing layer, permeable layer, asphalt surface treatment, and asphalt pavement pavement construction.

The vehicle-mounted gravel spreader is a road maintenance machinery that integrates machinery, electricity and gas. It

consists of 16 material doors, which can be fully opened or single-switched. It is easy to operate, spreads evenly, and spreads width adjustable. Features. During construction, hang it at the back of the dump truck compartment, and tilt the dump truck full of gravel by 35~45 degrees; the opening of the material door can be adjusted according to the actual situation of the operation to realize the amount of gravel to be spread; The variation of the spreading amount is realized by the speed of the motor.

The two must work together. The width of the spreading surface and the spreading position can be controlled by closing or opening some gates.





# Product Advantages »»

## Electrical system

1. 16 feed gates can be controlled separately to flexibly adjust spreading width.
2. Hopper is able to be remotely controlled in cabin or operating platform.
3. Perfect lighting system for working at night.
4. Hopper lifting limit alarm is installed to enhance safe working.
5. Quick couplings are applied to connect the electrical system of truck and spreader, which is easy to install and disassemble.

## Mechanical system

1. Feed gates are controlled by one general switch and 16 sub-switches for group control or separate control.
2. Fine tuning device can adjust single feed gate to effectively adjust spreading evenness and thoroughly solve the problem of uneven spreading locally by traditional chip spreader.
3. Exclusive roller anti-slipping device can effectively prevent the



## Air control system

1. The air control system is installed with filter to remove water vapor and foreign matter to ensure reliability of the system.
2. Superior elements ensure that the air circuit work stably and reliably.

aggregates from skidding on the roller.

4. Inclination angle of distributor plate and spreading plate is adjustable for aggregates of 3-30mm.

5. This machine is very easy to install and disassemble.

# The Main Technical Parameters »»

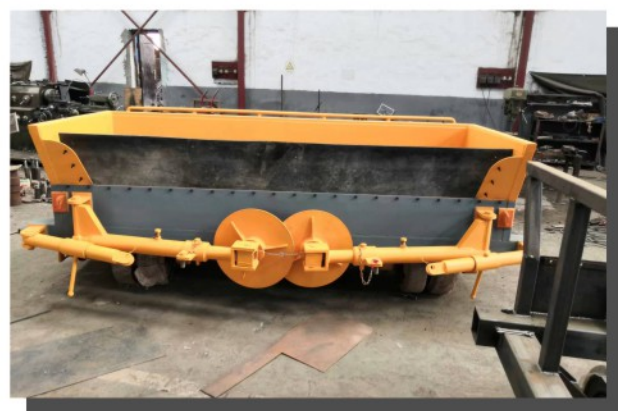
Type	SR-3000
Max. spreading width	500-3000mm
Aggregating specification	3-60mm
Spreading capacity	0.5-22m <sup>3</sup> /km <sup>2</sup>
Working speed	50-80m/min
Total width	3000mm
Total weight	2t
Overall dimensions	3620*2000*1400 (L*W*H)

Type	SR-3100
Max. spreading width	3100mm
Feed gate quantity	16
Aggregate size	3-30mm
Spreading amount	0.5-50m <sup>3</sup> /km <sup>2</sup>
Width	2500mm
Lower suspension	570mm
Rear suspension	1500mm
Weight	1300kg
Dimension	1900×2500×2100 (L×W×H)



# Product Photo »»

Chips Spreader Manual



Chips Spreader

